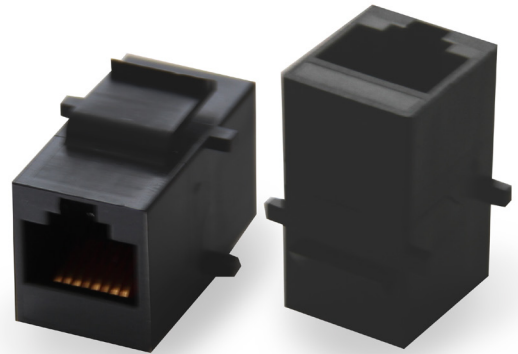


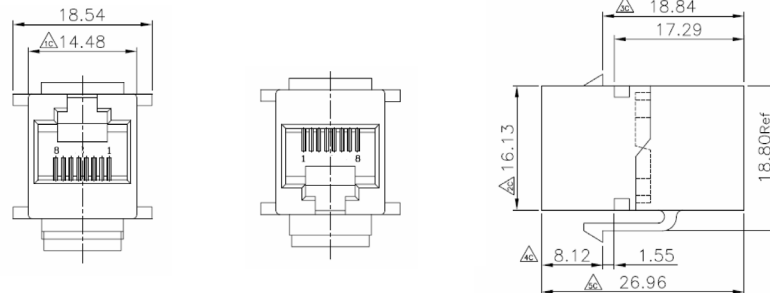
### UNSHIELDED , RJ45 THROUGH COUPLER, ETHERNET

#### TECHNICAL SPECIFICATIONS

Plastic Housing: UL94V-0 Thermoplastic  
 Contacts: 0.35mm Thickness Phosphor Bronze  
 Plating: 6u" Gold Plating over Nickel



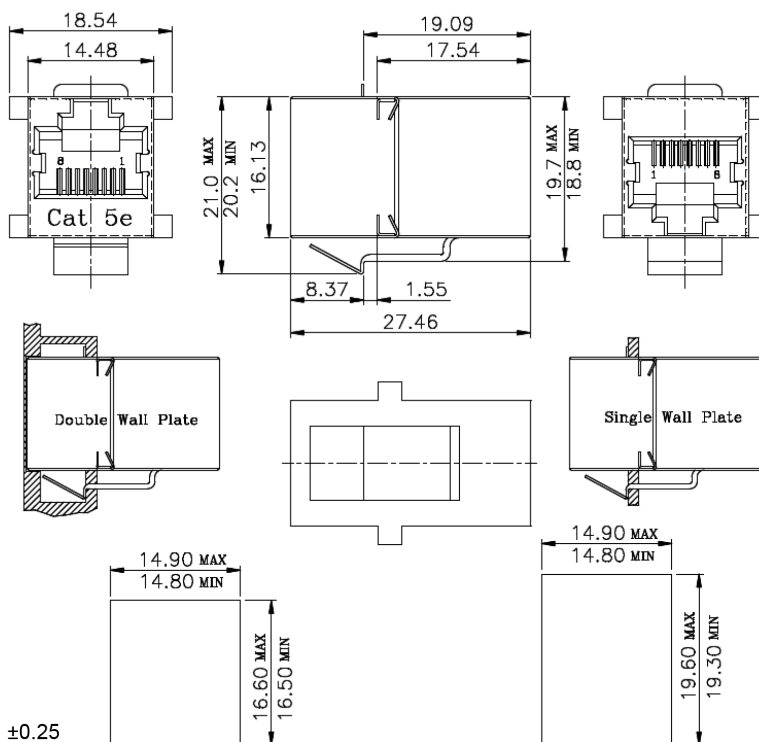
PART NUMBER
3101-8821



### UNSHIELDED , RJ45 THROUGH COUPLER, CAT 5E

#### TECHNICAL SPECIFICATIONS

Plastic Housing: UL94V-0 Thermoplastic  
 Contacts: 0.35mm Thickness Phosphor Bronze  
 Plating: 6u" Gold Plating over Nickel



Tolerance:  $\pm 0.25$

Front panel jack only clearance  
 w/o latch feature

Single panel - latch clearance  
 Panel thickness 0.062"

PART NUMBER
3101-CAT5E

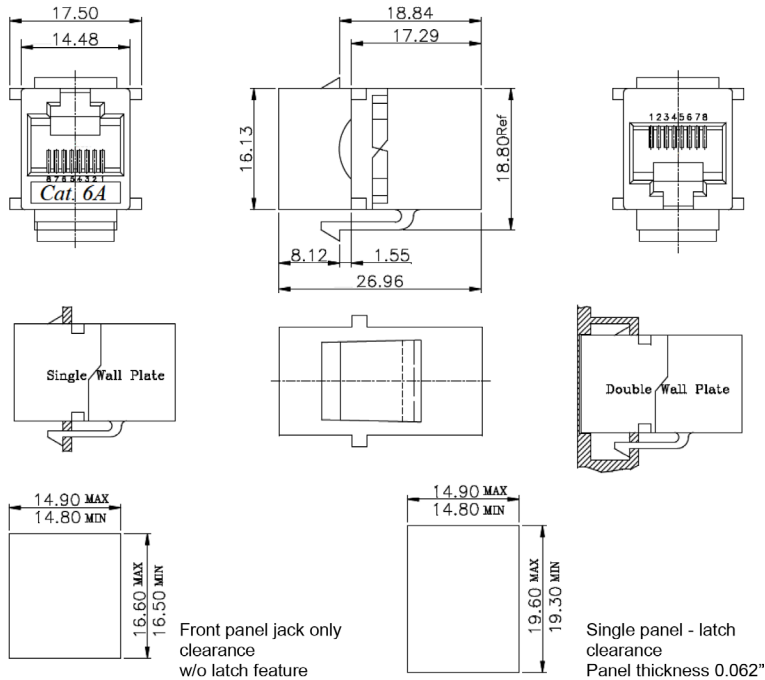
### UNSHIELDED , RJ45 THROUGH COUPLER, CAT 6

#### TECHNICAL SPECIFICATIONS

Plastic Housing: UL94V-0 Thermoplastic  
 Contacts: 0.35mm Thickness Phosphor Bronze  
 Plating: 6u" Gold Plating over Nickel



PART NUMBER
3101-CAT6



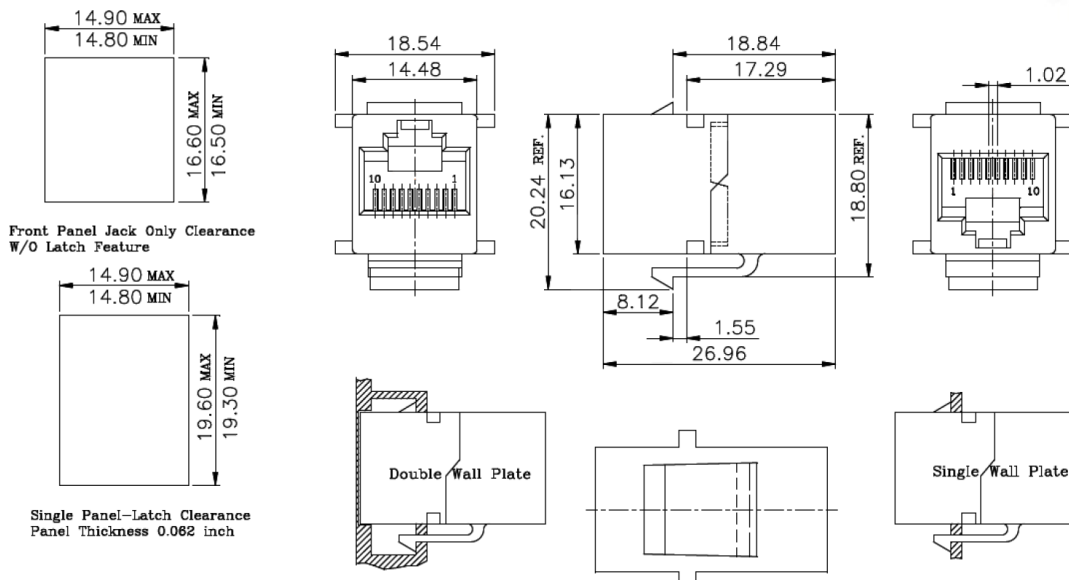
### UNSHIELDED , 10P10C THROUGH COUPLER

#### TECHNICAL SPECIFICATIONS

Plastic Housing: UL94V-0 Thermoplastic  
 Contacts: 0.35mm Thickness Phosphor Bronze  
 Plating: 6u" Gold Plating over Nickel



PART NUMBER
3101-101011



Tolerance:  $\pm 0.25$