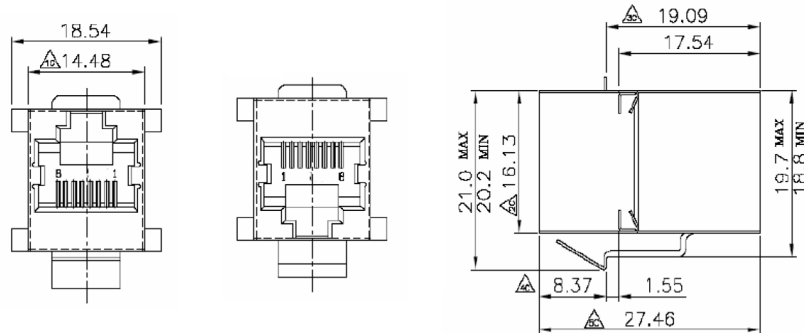
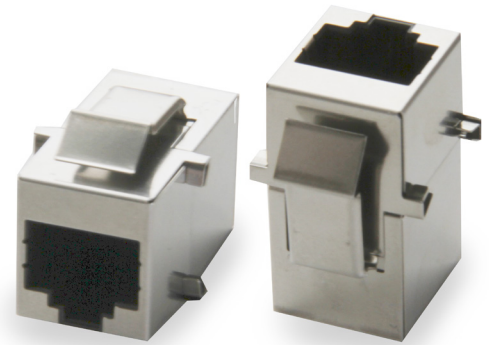


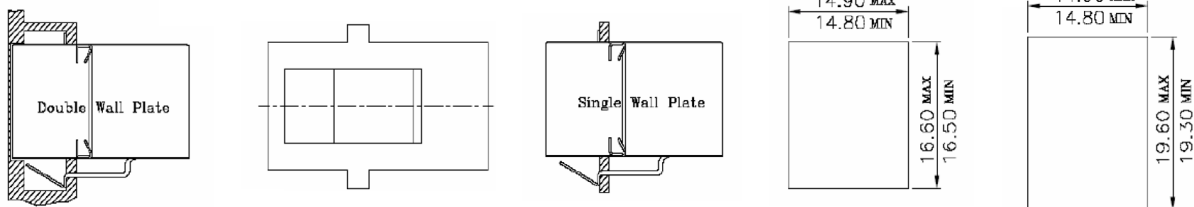
SHIELDED , RJ45 THROUGH COUPLER, ETHERNET

TECHNICAL SPECIFICATIONS

Plastic Housing: UI94V-0 Thermoplastic
 Shield: Stainless Steel
 Contacts: 0.35mm Thickness Phosphor Bronze
 Plating: 6u" Gold Plating over Nickel



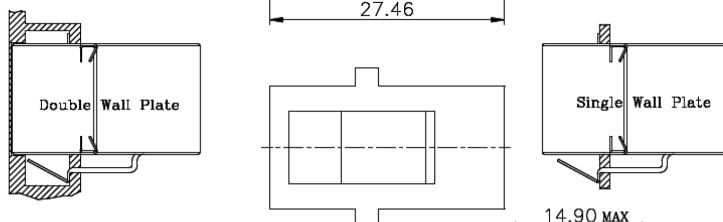
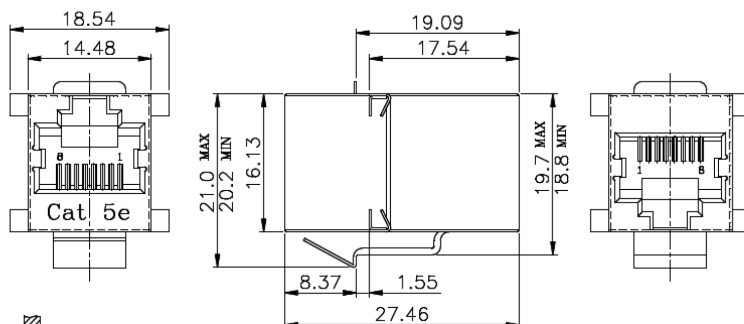
PART NUMBER
3101S-8821



SHIELDED , RJ45 THROUGH COUPLER, CAT 5E

TECHNICAL SPECIFICATIONS

Plastic Housing: UI94V-0 Thermoplastic
 Shield: Stainless Steel
 Contacts: 0.35mm Thickness Phosphor Bronze
 Plating: 6u" Gold Plating over Nickel



Tolerance: ± 0.25

Front panel jack only clearance
w/o latch feature

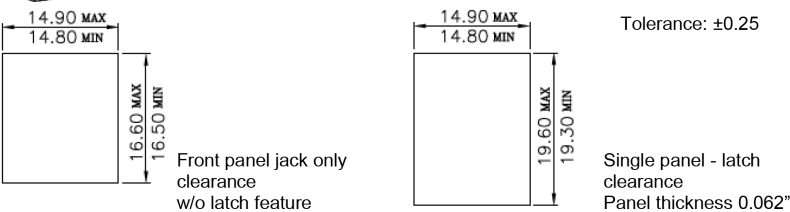
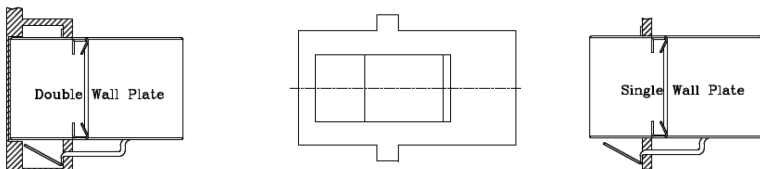
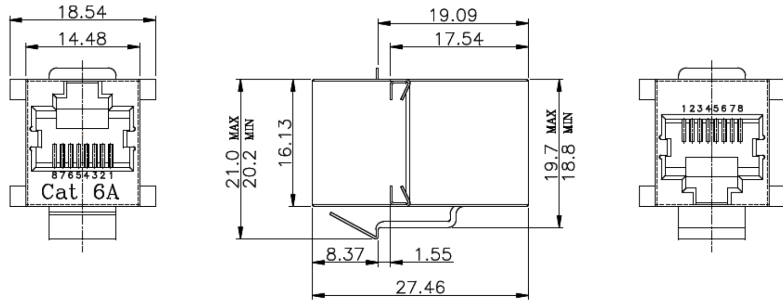
Single panel - latch clearance
Panel thickness 0.062"

PART NUMBER
3101S-CAT5E

SHIELDED , RJ45 THROUGH COUPLER, CAT 6

TECHNICAL SPECIFICATIONS

Plastic Housing: UI94V-0 Thermoplastic
 Shield: Stainless Steel
 Contacts: 0.35mm Thickness Phosphor Bronze
 Plating: 6u" Gold Plating over Nickel

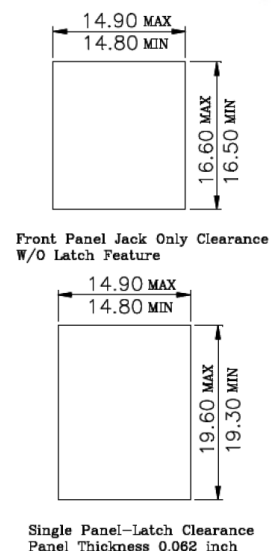
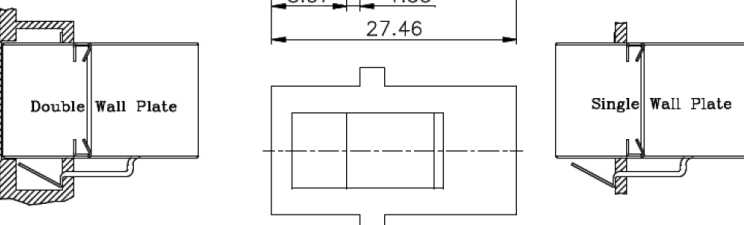
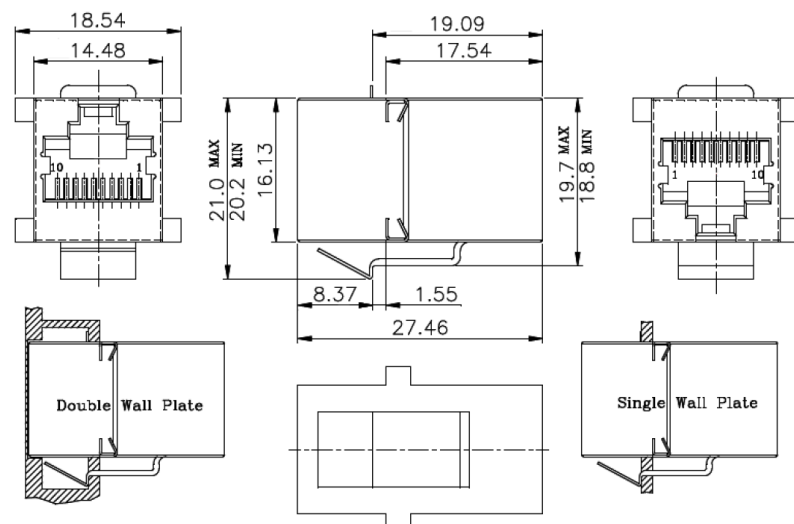
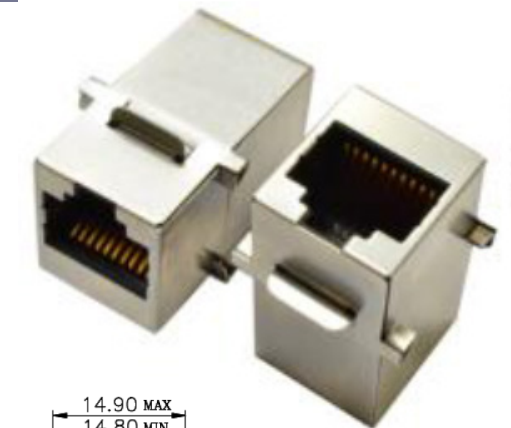


PART NUMBER
3101S-CAT6

SHIELDED , 10P10C THROUGH COUPLER

TECHNICAL SPECIFICATIONS

Plastic Housing: UI94V-0 Thermoplastic
 Shield: Stainless Steel
 Contacts: 0.35mm Thickness Phosphor Bronze
 Plating: 6u" Gold Plating over Nickel



PART NUMBER
3101S-101011