

SCREW TOGETHER HOODS, 3-WAY ENTRY

TRI-P SERIES

TECHNICAL SPECIFICATIONS

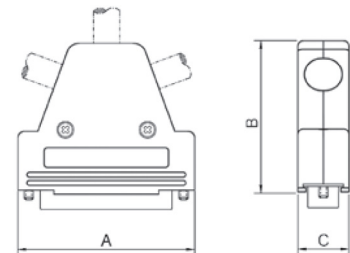
Material:	UL 94 V-0 Plastic Material
Operating Temperature:	-55°C to +110°C
Cable Entry:	Side/Top/Side
Thumbscrews:	UNC 4-40 (standard)
	M2.5, M2.6 or M3.0 on request
Cable Diameter:	Up to 11.5 mm
Colour:	Black

FEATURES

- Available in sizes 9-15-25-37
- All sizes feature 3-Way Entry solution
- Re-openable
- Hood is supplied with 2 Blanking Plates and 2 Strain Relief Clamps. Extra Blanking Plates and/or Strain Reliefs are available on request
- Also available in Metalized version

Size	Product Code
9-way	TRI-P-09-K
15-way	TRI-P-15-K
25-way	TRI-P-25-K
37-way	TRI-P-37-K

Size	Dim A	Dim B	Dim C
9-way	31,0	45,2	15,0
15-way	40,3	45,2	15,0
25-way	53,5	45,2	15,0
37-way	70,0	45,2	15,0



ECONOMY TWO PIECE SNAP TOGETHER HOODS

CCOV-SN SERIES

TECHNICAL SPECIFICATIONS

Material:	UL Recognised Plastic Material
Operating Temperature:	-55°C to +110°C
Cable Entry:	Top
Thumbscrews:	UNC 4-40 (standard)
Cable Diameter:	Up to 11.5 mm
Colour:	Black or Light Grey

Size	Dim A	Dim B	Dim C
9-way	30,5	15,5	39,2
15-way	40,1	15,5	39,6
25-way	53,6	16,0	43,0

Size	Product Code
9-way	CCOV9-SN-BK
15-way	CCOV15-SN-BK
25-way	CCOV25-SN-BK

Size	Product Code
9-way	CCOV9-SN-LG
15-way	CCOV15-SN-LG
25-way	CCOV25-SN-LG

