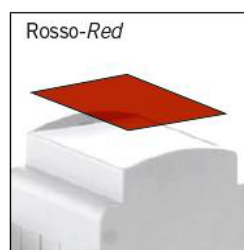
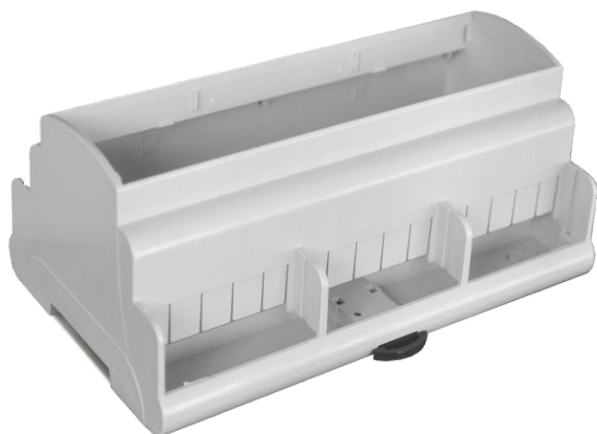


### DIN RAIL MODULAR ENCLOSURES

#### MR9/KD SERIES, 9 MODULE ENCLOSURE



#### MR9/KD

Modular Housing, 9 unit, H 53 mm, for mounting on Omega Rail acc. to DIN EN 50022. It is suitable to house analogue and digital instrumentation. Snap-in locking between base and cover. The interconnection area is slotted and can be open or covered with the relevant terminal covers. Custom drilling on any side (windows, holes, slots). Made in Blend PC/ABS, on request in class UL94V0, in RAL7035 grey. **Special colours on request.**

**Materiale material**

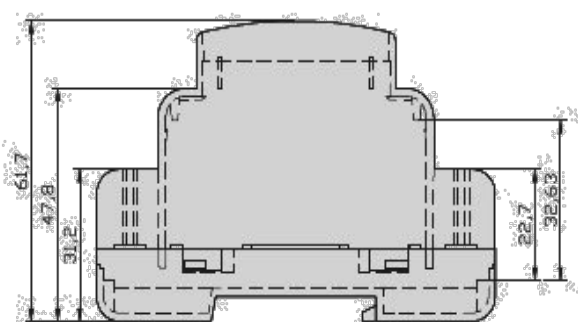
BLEND PC/ABS

**Colore colour**

RAL7035 GREY

units	1	2	3	4	5	6	9	12
width	17.5	35	52.5	70	87.5	105	157.5	210

#### Dimensions



#### Accessories

