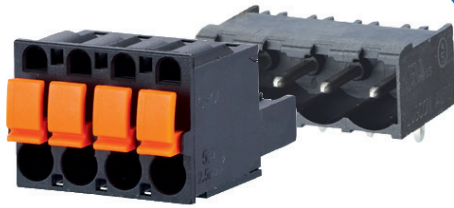


SPRING CLAMP TERMINAL BLOCKS, PLUGGABLE, 5.08mm PITCH



* Approval pending



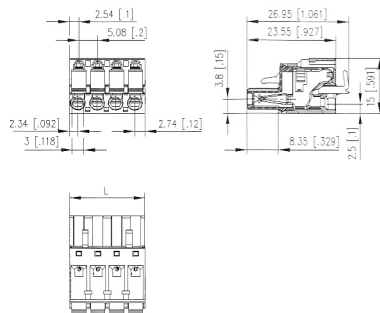
Product family	Pole size	Color	Option
SP066xxVBPC			
Centerline	Design	Function	

- spring clamp terminal block, pluggable
- centerline 5.08 mm, direction of connection vertical 0°
- fittable without loss of poles
- color black
- finger push-button, wire entry uncodeable side parallel to plug direction

Technical data

UL V / A / AWG	300 / 12 / 28 - 12		
SEV 12 A / 250 V / 4 kV / 3 / 0.08 - 2.5 mm ² / IEC 61984			
Overvoltage category	III	III	II
Pollution degree	3	2	2
Rated voltage	250 V	630 V	630 V
Rated test voltage	4.0 kV	4.0 kV	4 kV
Insulating material class	CTI 600		
Rated wiring solid wire	0.08 - 2.5 mm ²		
Rated wiring stranded wire	0.08 - 2.5 mm ²		
Rated wiring solid wire	AWG 28 - 12		
Rated wiring stranded wire	AWG 28 - 12		
Clearance and creepage distances	3.58 mm		
Protection category according to IEC 60529	IP 20		
Min. insul. strip length	10 mm		
Color	black		

Dimensional drawing



$L = (\text{Pole size} - 1) * \text{centerline} + 5.08 \text{ mm (0.200 in.)}$

P/N

SP066XXVBPC ☐ VBPC

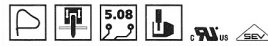
Complete the part number by adding the pole size.

	02	03	04	05	06	07	08
09	10	11	12	13	14	15	16
17	18	19	20	21	22	23	24

SPRING CLAMP TERMINAL BLOCKS, PLUGGABLE, 5.08mm PITCH



* Approval pending



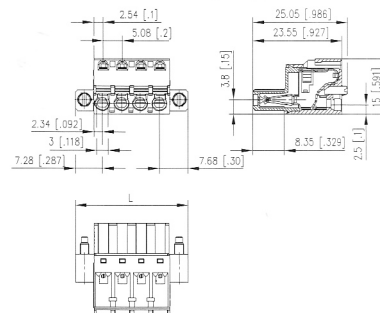
Product family	Pole size	Color	Option
SP066xxVBNF			
Centerline	Design	Function	

- spring clamp terminal block, pluggable
- centerline 5.08 mm, direction of connection vertical 0°
- color black, mounting flange
- push-button, wire entry uncodeable side parallel to plug direction

Technical data

UL V / A / AWG	300 / 12 / 28 - 12		
SEV 12 A / 250 V / 4 kV / 3 / 0.08 - 2.5 mm ² / IEC 61984			
Overvoltage category	III	III	II
Pollution degree	3	2	2
Rated voltage	250 V	630 V	630 V
Rated test voltage	4.0 kV	4.0 kV	4 kV
Insulating material class	CTI 600		
Rated wiring solid wire	0.08 - 2.5 mm ²		
Rated wiring stranded wire	0.08 - 2.5 mm ²		
Rated wiring solid wire	AWG 28 - 12		
Rated wiring stranded wire	AWG 28 - 12		
Clearance and creepage distances	3.58 mm		
Protection category according to IEC 60529	IP 20		
Min. insul. strip length	10 mm		
Color	black		

Dimensional drawing



$L = (\text{Pole size} - 1) * \text{centerline} + 14.96 \text{ mm (0.589 in.)}$

P/N

SP066XXVBNF ☐ VBNF

Complete the part number by adding the pole size.

	02	03	04	05	06	07	08
09	10	11	12	13	14	15	16
17	18	19	20	21	22	23	24