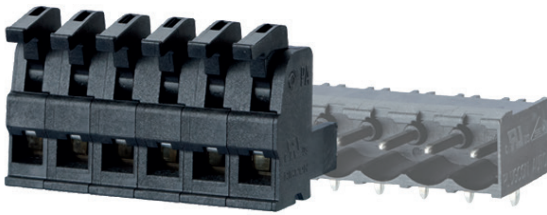


SPRING CLAMP TERMINAL BLOCKS, PLUGGABLE, 5.08mm PITCH



* Approval pending



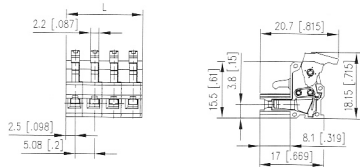
| Product family | Pole size | Color | Option |
|--------------------|-----------|----------|-------------------|
| SP046xxVBNC | | | |
| Centerline | Design | Function | *old product name |

- spring clamp terminal block, pluggable
- centerline 5.08 mm, direction of connection vertical 0°
- fittable without loss of poles
- color black
- eccentric lever, wire entry uncodeable side parallel to plug direction

Technical data

| | | | |
|--|--|-------|--------|
| UL V / A / AWG | 300 / 10 / 28 - 16 | | |
| SEV * | 10 A / 250 V / 4 kV / 3 / 0.08 - 1 mm ² / IEC 61984 | | |
| Overvoltage category | III | III | II |
| Pollution degree | 3 | 2 | 2 |
| Rated voltage | 250 V | 500 V | 500 V |
| Rated test voltage | 4.0 kV | 4 kV | 4.0 kV |
| Insulating material class | CTI 400 | | |
| Rated wiring solid wire | 0.08 - 1.5 mm ² | | |
| Rated wiring stranded wire | 0.08 - 1.5 mm ² | | |
| Rated wiring solid wire | AWG 28 - 16 | | |
| Rated wiring stranded wire | AWG 28 - 16 | | |
| Clearance and creepage distances | 4 mm | | |
| Protection category according to IEC 60529 | IP 20 | | |
| Min. insul. strip length | 4 mm | | |
| Color | black | | |

Dimensional drawing



L = (Pole size - 1) * centerline + 5 mm (0.197 in.)

P/N

SP046XXVBNC

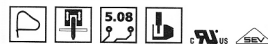
Complete the part number by adding the pole size.

| | | | | | | |
|----|----|----|----|----|----|----|
| 02 | 03 | 04 | 05 | 06 | 07 | 08 |
| 09 | 10 | 11 | 12 | 13 | 14 | 15 |
| 16 | 17 | 18 | 19 | 20 | 21 | 22 |
| 23 | 24 | | | | | |

SPRING CLAMP TERMINAL BLOCKS, PLUGGABLE, 5.08mm PITCH



* Approval pending



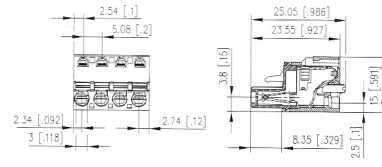
| Product family | Pole size | Color | Option |
|--------------------|-----------|----------|--------|
| SP066xxVBNC | | | |
| Centerline | Design | Function | |

- spring clamp terminal block, pluggable
- centerline 5.08 mm, direction of connection vertical 0°
- fittable without loss of poles
- color black
- push-button, wire entry uncodeable side parallel to plug direction

Technical data

| | | | |
|--|--|--------|-------|
| UL V / A / AWG | 300 / 12 / 28 - 12 | | |
| SEV * | 12 A / 250 V / 4 kV / 3 / 0.08 - 2.5 mm ² / IEC 61984 | | |
| Overvoltage category | III | III | II |
| Pollution degree | 3 | 2 | 2 |
| Rated voltage | 250 V | 630 V | 630 V |
| Rated test voltage | 4.0 kV | 4.0 kV | 4 kV |
| Insulating material class | CTI 600 | | |
| Rated wiring solid wire | 0.08 - 2.5 mm ² | | |
| Rated wiring stranded wire | 0.08 - 2.5 mm ² | | |
| Rated wiring solid wire | AWG 28 - 12 | | |
| Rated wiring stranded wire | AWG 28 - 12 | | |
| Clearance and creepage distances | 3.58 mm | | |
| Protection category according to IEC 60529 | IP 20 | | |
| Min. insul. strip length | 10 mm | | |
| Color | black | | |

Dimensional drawing



L = (Pole size - 1) * centerline + 5.08 mm (0.200 in.)

P/N

SP066XXVBNC

VBNC

Complete the part number by adding the pole size.

| | | | | | | |
|----|----|----|----|----|----|----|
| 02 | 03 | 04 | 05 | 06 | 07 | 08 |
| 09 | 10 | 11 | 12 | 13 | 14 | 15 |
| 16 | 17 | 18 | 19 | 20 | 21 | 22 |
| 23 | 24 | | | | | |