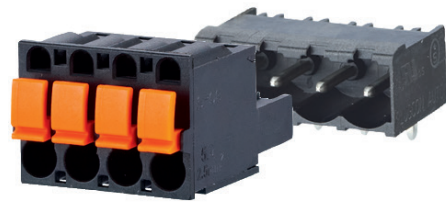
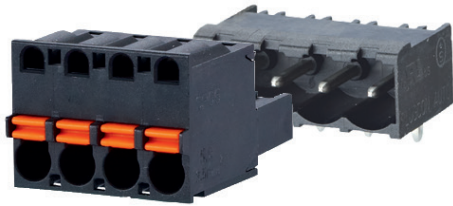
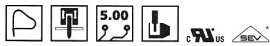


SPRING CLAMP TERMINAL BLOCKS, PLUGGABLE, 5.00mm PITCH

SPRING CLAMP TERMINAL BLOCKS, PLUGGABLE, 5.00mm PITCH



* Approval pending



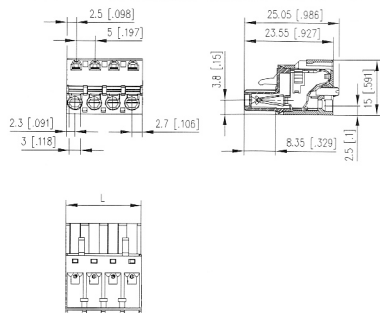
Product family	Pole size	Color	Option
SP06	5xx	V	BNC
Centerline	Design	Function	

- spring clamp terminal block, pluggable
- centerline 5.00 mm, direction of connection vertical 0°
- fittable without loss of poles
- color black
- push-button, wire entry uncodeable side parallel to plug direction

Technical data

cULus V / A / AWG	300 / 12 / 28 - 12		
SEV* 12 A / 250 V / 4 kV / 3 / 0.08 - 2.5 mm ² / IEC 61984			
Overvoltage category	III	III	II
Pollution degree	3	2	2
Rated voltage	250 V	630 V	630 V
Rated test voltage	4.0 kV	4.0 kV	4 kV
Insulating material class	CTI 600		
Rated wiring solid wire	0.08 - 2.5 mm ²		
Rated wiring stranded wire	0.08 - 2.5 mm ²		
Rated wiring solid wire	AWG 28 - 12		
Rated wiring stranded wire	AWG 28 - 12		
Clearance and creepage distances	3.5 mm		
Protection category according to IEC 60529	IP 20		
Min. insul. strip length	10 mm		
Color	black		

Dimensional drawing



L = (Pole size - 1) * centerline + 5 mm (0.197 in.)

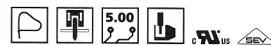
P/N
SP065XXVBNC

VBNC

Complete the part number
by adding the pole size.

02	03	04	05	06	07	08
09	10	11	12	13	14	15
16	17	18	19	20	21	22
23	24					

* Approval pending



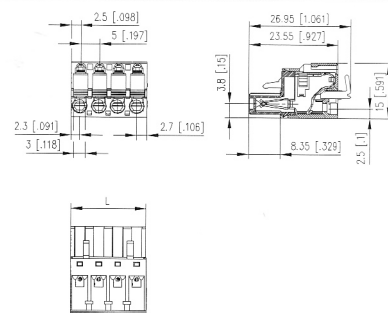
Product family	Pole size	Color	Option
SP06	5xx	V	BPC
Centerline	Design	Function	

- spring clamp terminal block, pluggable
- centerline 5.00 mm, direction of connection vertical 0°
- fittable without loss of poles
- color black
- finger push-button, wire entry uncodeable side parallel to plug direction

Technical data

cULus V / A / AWG	300 / 12 / 28 - 12		
SEV* 12 A / 250 V / 4 kV / 3 / 0.08 - 2.5 mm ² / IEC 61984			
Overvoltage category	III	III	II
Pollution degree	3	2	2
Rated voltage	250 V	630 V	630 V
Rated test voltage	4.0 kV	4.0 kV	4 kV
Insulating material class	CTI 600		
Rated wiring solid wire	0.08 - 2.5 mm ²		
Rated wiring stranded wire	0.08 - 2.5 mm ²		
Rated wiring solid wire	AWG 28 - 12		
Rated wiring stranded wire	AWG 28 - 12		
Clearance and creepage distances	3.5 mm		
Protection category according to IEC 60529	IP 20		
Min. insul. strip length	10 mm		
Color	black		

Dimensional drawing



L = (Pole size - 1) * centerline + 5 mm (0.197 in.)

P/N
SP065XXVBPC

VBPC

Complete the part number
by adding the pole size.

02	03	04	05	06	07	08
09	10	11	12	13	14	15
16	17	18	19	20	21	22
23	24					