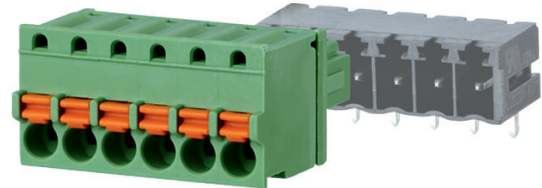
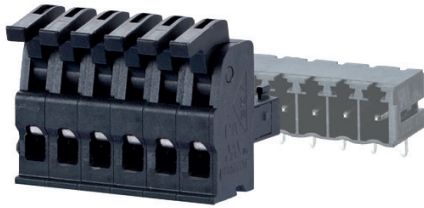


SPRING CLAMP TERMINAL BLOCKS, PLUGGABLE, 3.81mm PITCH

SPRING CLAMP TERMINAL BLOCKS, PLUGGABLE, 3.81mm PITCH

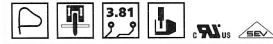


Product family Pole size Color Option
SP044xxVBNN*(ASP044)
 Centerline Design Function *old product name

- spring clamp terminal block, pluggable
- centerline 3.81 mm, direction of connection vertical 0°
- color black
- eccentric lever, wire entry uncodeable side parallel to plug direction

Technical data

cULus V / A	150 / 10		
SEV 10 A / 130 V / 2.5 kV / 3 / 0.08 - 1.5 mm ² / IEC 61984			
Overvoltage category	III	III	II
Pollution degree	3	2	2
Rated voltage	160 V	320 V	320 V
Rated test voltage	2.5 kV	2.5 kV	2.5 kV
Insulating material class	CTI 400		
Rated wiring solid wire	0.08 - 1.5 mm ²		
Rated wiring stranded wire	0.08 - 1.5 mm ²		
Rated wiring solid wire	AWG 28 - 16		
Rated wiring stranded wire	AWG 28 - 16		
Clearance and creepage distances	2.6 mm		
Protection category according to IEC 60529	IP 20		
Min. insul. strip length	6 mm		
Color	black		



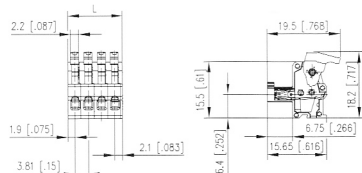
Product family Pole size Color Option
SP064xxVGNN*(ASP064)
 Centerline Design Function *old product name

- spring clamp terminal block, pluggable
- centerline 3.81 mm, direction of connection vertical 0°
- color green
- push-button, wire entry uncodeable side parallel to plug direction

Technical data

cULus V / A / AWG	150 / 8 / 28 - 16		
SEV 9 A / 130 V / 2.5 kV / 3 / 0.08 - 1.5 mm ² / IEC 61984			
Overvoltage category	III	III	II
Pollution degree	3	2	2
Rated voltage	125 V	320 V	320 V
Rated test voltage	2.5 kV	2.5 kV	2.5 kV
Insulating material class	CTI 600		
Rated wiring solid wire	0.08 - 1.5 mm ²		
Rated wiring stranded wire	0.08 - 1.5 mm ²		
Rated wiring solid wire	AWG 28 - 16		
Rated wiring stranded wire	AWG 28 - 16		
Clearance and creepage distances	1.9 mm		
Protection category according to IEC 60529	IP 20		
Min. insul. strip length	9 mm		
Color	green		

Dimensional drawing



L = (Pole size - 1) * centerline + 4 mm (0.157 in.)

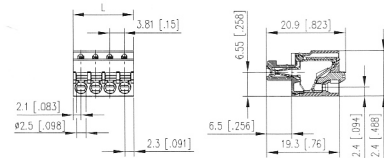
P/N

SP044XXVBNN

Complete the part number
by adding the pole size.

02	03	04	05	06	07	08
09	10	11	12			

Dimensional drawing



L = (Pole size - 1) * centerline + 4.6 mm (0.181 in.)

P/N

SP064XXVGNN

Complete the part number
by adding the pole size.

02	03	04	05	06	07	08
09	10	11	12	13	14	15
16	17	18	19	20	21	22
23	24					