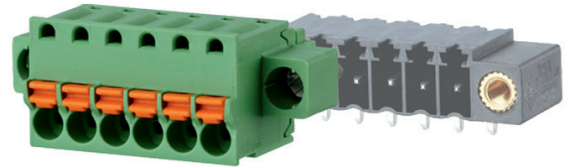
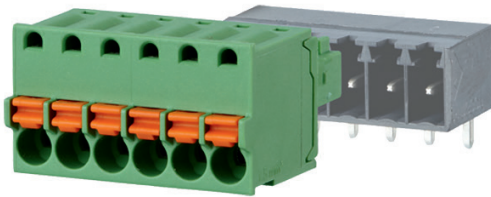
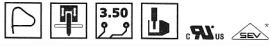


## SPRING CLAMP TERMINAL BLOCKS, PLUGGABLE, 3.50mm PITCH

## SPRING CLAMP TERMINAL BLOCKS, PLUGGABLE, 3.50mm PITCH



\* Approval pending



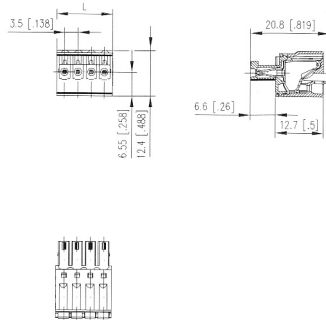
Product family	Pole size	Color	Option
SP063xxVGNN			
Centerline	Design	Function	*old product name

- spring clamp terminal block, pluggable
- centerline 3.50 mm, direction of connection vertical 0°
- color green
- push-button, wire entry uncodeable side parallel to plug direction

### Technical data

V / A / AWG	150 / 8 / 28 - 16		
8 A / 130 V / 2.5 kV / 3 / 0.08 - 1.5 mm <sup>2</sup> / IEC 61984			
Overvoltage category	III	III	II
Pollution degree	3	2	2
Rated voltage	125 V	320 V	320 V
Rated test voltage	2.5 kV	2.5 kV	2.5 kV
Insulating material class	CTI 600		
Rated wiring solid wire	0.08 - 1.5 mm <sup>2</sup>		
Rated wiring stranded wire	0.08 - 1.5 mm <sup>2</sup>		
Rated wiring solid wire	AWG 28 - 16		
Rated wiring stranded wire	AWG 28 - 16		
Clearance and creepage distances	1.9 mm		
Protection category according to IEC 60529	IP 20		
Min. insul. strip length	9 mm		
Color	green		

### Dimensional drawing



$$L = (\text{Pole size} - 1) * \text{centerline} + 4.3 \text{ mm (0.169 in.)}$$

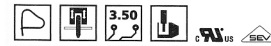
P/N

SP063XXVGNN

Complete the part number  
by adding the pole size.

02	03	04	05	06	07	08
09	10	11	12	13	14	15
16	17	18	19	20	21	22
23	24					

\* Approval pending



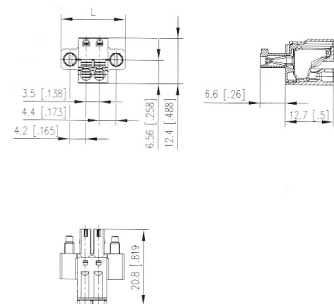
Product family	Pole size	Color	Option
SP063xxVGNF			
Centerline	Design	Function	*old product name

- spring clamp terminal block, pluggable
- centerline 3.50 mm, direction of connection vertical 0°
- color green, mounting flange
- push-button, wire entry uncodeable side parallel to plug direction

### Technical data

V / A / AWG	150 / 8 / 28 - 16		
8 A / 130 V / 2.5 kV / 3 / 0.08 - 1.5 mm <sup>2</sup> / IEC 61984			
Overvoltage category	III	III	II
Pollution degree	3	2	2
Rated voltage	125 V	320 V	320 V
Rated test voltage	2.5 kV	2.5 kV	2.5 kV
Insulating material class	CTI 600		
Rated wiring solid wire	0.08 - 1.5 mm <sup>2</sup>		
Rated wiring stranded wire	0.08 - 1.5 mm <sup>2</sup>		
Rated wiring solid wire	AWG 28 - 16		
Rated wiring stranded wire	AWG 28 - 16		
Clearance and creepage distances	1.9 mm		
Protection category according to IEC 60529	IP 20		
Min. insul. strip length	9 mm		
Color	green		

### Dimensional drawing



$$L = (\text{Pole size} - 1) * \text{centerline} + 13.50 \text{ mm (0.531 in.)}$$

P/N

SP063XXVGNF

Complete the part number  
by adding the pole size.

02	03	04	05	06	07	08
09	10	11	12	13	14	15
16	17	18	19	20	21	22
23	24					