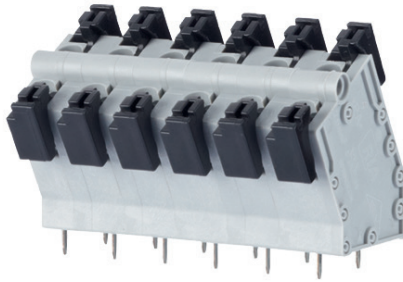


SPRING CLAMP TERMINAL BLOCKS, SOLDERABLE, 7.62mm PITCH

SPRING CLAMP TERMINAL BLOCKS, SOLDERABLE, 7.62mm PITCH



Product family	Pole size	Color	Option
ST188xxLDNN			
Centerline	Design	Function	*old product name

- spring clamp terminal block, solderable, double solder pins
- centerline 7.62 mm, direction of connection 60°
- color gray
- push-button, double solder pins

Technical data

V / A / AWG	750 / 15 / 28 - 12		
1 mm ²	250 V / 13.5 A / T60		
Overvoltage category	III	III	II
Pollution degree	3	2	2
Rated voltage	500 V	1250 V	1250 V
Rated test voltage	6.0 kV	6.0 kV	6 kV
Insulating material class	CTI 600		
Rated wiring solid wire	0.08 - 2.5 mm ²		
Rated wiring stranded wire	0.08 - 2.5 mm ²		
Rated wiring solid wire	AWG 28 - 12		
Rated wiring stranded wire	AWG 28 - 12		
Clearance and creepage distances	7.12 mm		
Solder pin dimension	2 x 0.5 x 1.0 mm		
Recommended pc board hole dia.	ø 1.4 mm		
Solder pin length	4 mm		
Protection category according to IEC 60529	IP 20		
Min. insul. strip length	15 mm		
Color	gray		

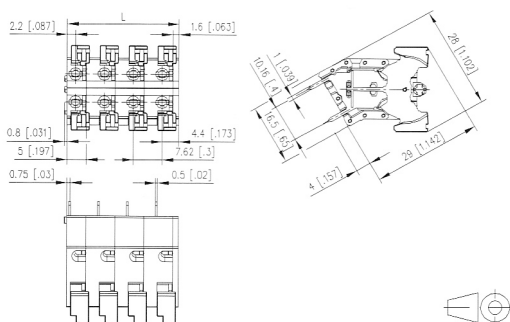
Product family	Pole size	Color	Option
ST108xxVDNN			
Centerline	Design	Function	*old product name

- spring clamp terminal block, solderable, double solder pins
- centerline 7.62 mm, direction of connection vertical 0°
- color gray
- push-button, double solder pins

Technical data

V / A / AWG	600 / 15 / 28 - 12		
1 mm ²	250 V / 13.5 A / T60		
Overvoltage category	III	III	II
Pollution degree	3	2	2
Rated voltage	500 V	1250 V	1250 V
Rated test voltage	6.0 kV	6.0 kV	6 kV
Insulating material class	CTI 600		
Rated wiring solid wire	0.2 - 2.5 mm ²		
Rated wiring stranded wire	0.2 - 2.5 mm ²		
Rated wiring solid wire	AWG 28 - 12		
Rated wiring stranded wire	AWG 28 - 12		
Clearance and creepage distances	7.12 mm		
Solder pin dimension	2 x 0.5 x 1.0 mm		
Recommended pc board hole dia.	ø 1.4 mm		
Solder pin length	3.4 mm		
Protection category according to IEC 60529	IP 20		
Min. insul. strip length	15 mm		
Color	gray		

Dimensional drawing



L = (Pole size - 1) * centerline + 6.6 mm (0.260 in.)

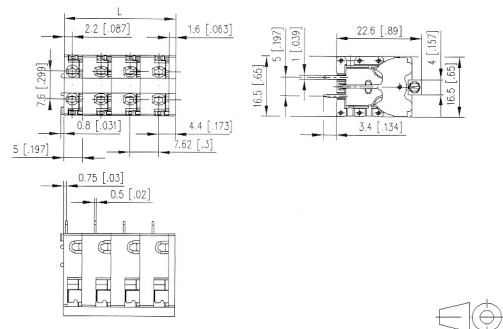
P/N

ST188XXLDNN

Complete the part number by adding the pole size.

02	03	04	05	06	07	08
09	10	11	12	13	14	15
16	17	18	19	20	21	22
23	24					

Dimensional drawing



L = (Pole size - 1) * centerline + 6.6 mm (0.260 in.)

P/N

ST108XXVDNN

Complete the part number by adding the pole size.

02	03	04	05	06	07	08
09	10	11	12			