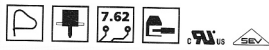
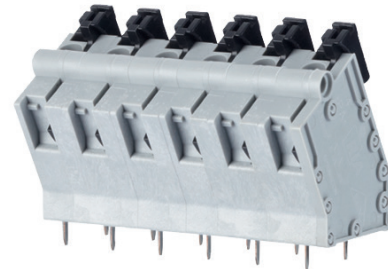


## SPRING CLAMP TERMINAL BLOCKS, SOLDERABLE, 7.62mm PITCH

## SPRING CLAMP TERMINAL BLOCKS, SOLDERABLE, 7.62mm PITCH



Product family Pole size Color Option  
**ST098xxHDNN** \* (AST098)  
 Centerline Design Function \*old product name

- spring clamp terminal block, solderable, double solder pins
- centerline 7.62 mm, direction of connection 90°
- color gray
- push-button, double solder pins

### Technical data

UL V / A / AWG 600 / 15 / 28 - 12

SEV 1 mm<sup>2</sup> 250 V / 13.5 A / T60

Overvoltage category	III	III	II
Pollution degree	3	2	2
Rated voltage	500 V	1250 V	1250 V
Rated test voltage	6.0 kV	6.0 kV	6 kV
Insulating material class	CTI 600		
Rated wiring solid wire	0.2 - 2.5 mm <sup>2</sup>		
Rated wiring stranded wire	0.2 - 2.5 mm <sup>2</sup>		
Rated wiring solid wire	AWG 28 - 12		
Rated wiring stranded wire	AWG 28 - 12		
Clearance and creepage distances	7.12 mm		
Solder pin dimension	2 x 1.0 x 0.8 mm		
Recommended pc board hole dia.	ø 1.4 mm		
Solder pin length	3.48 mm		
Protection category according to IEC 60529	IP 20		
Min. insul. strip length	15 mm		
Color	gray		

\* Approval pending



Product family Pole size Color Option  
**ST178xxLDNN** \* (AST178)  
 Centerline Design Function \*old product name

- spring clamp terminal block, solderable, double solder pins
- centerline 7.62 mm, direction of connection 60°
- color gray
- push-button

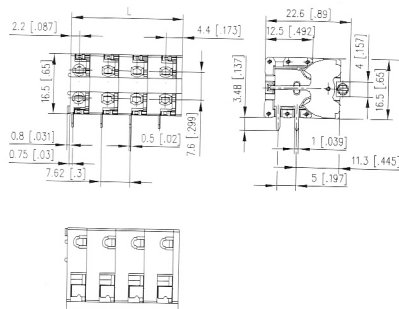
### Technical data

UL V / A / AWG 750 / 15 / 28 - 12

SEV 1 mm<sup>2</sup> 250 V / 13.5 A / T60

Overvoltage category	III	III	II
Pollution degree	3	2	2
Rated voltage	500 V	1250 V	1250 V
Rated test voltage	6.0 kV	6.0 kV	6 kV
Insulating material class	CTI 600		
Rated wiring solid wire	0.08 - 2.5 mm <sup>2</sup>		
Rated wiring stranded wire	0.08 - 2.5 mm <sup>2</sup>		
Rated wiring solid wire	AWG 28 - 12		
Rated wiring stranded wire	AWG 28 - 12		
Clearance and creepage distances	7.12 mm		
Solder pin dimension	2 x 0.5 x 1.0 mm		
Recommended pc board hole dia.	ø 1.4 mm		
Solder pin length	4 mm		
Protection category according to IEC 60529	IP 20		
Min. insul. strip length	15 mm		
Color	gray		

### Dimensional drawing



L = (Pole size - 1) \* centerline + 6.6 mm (0.260 in.)

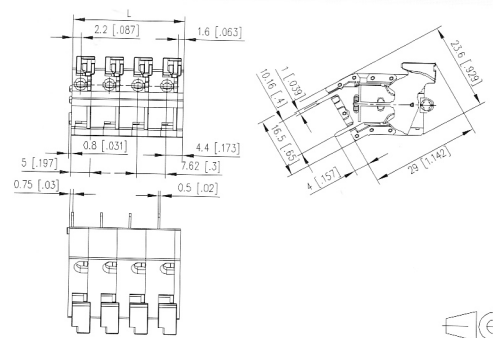
P/N

ST098XXHDNN

Complete the part number by adding the pole size.

02	03	04	05	06	07	08
09	10	11	12			

### Dimensional drawing



L = (Pole size - 1) \* centerline + 6.6 mm (0.260 in.)

P/N

ST178XXLDNN

Complete the part number by adding the pole size.

02	03	04	05	06	07	08
09	10	11	12	13	14	15
17	18	19	20	21	22	23
						24