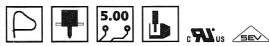
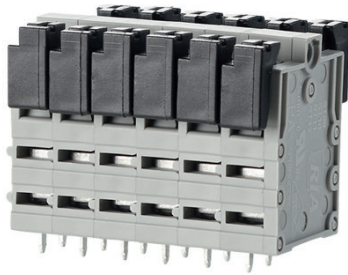


SPRING CLAMP TERMINAL BLOCKS, SOLDERABLE, 5.00mm PITCH

SPRING CLAMP TERMINAL BLOCKS, SOLDERABLE, 5.00mm PITCH



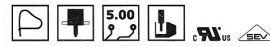
Product family Pole size Color Option
ST125xxVDNN * (AST125)
 Centerline Design Function *old product name

- spring clamp terminal block, solderable, double solder pins
- centerline 5.00 mm, direction of connection vertical 0°
- color gray
- finger push-button, double solder pins

Technical data

UL US V / A / AWG 300 / 15 / 28 - 12

SEV 1 mm ²	250 V / 13.5 A / T60		
Overvoltage category	III	III	II
Pollution degree	3	2	2
Rated voltage	320 V	800 V	800 V
Rated test voltage	4 kV	4.0 kV	4 kV
Insulating material class	CTI 600		
Rated wiring solid wire	0.2 - 2.5 mm ²		
Rated wiring stranded wire	0.2 - 2.5 mm ²		
Rated wiring solid wire	AWG 28 - 12		
Rated wiring stranded wire	AWG 28 - 12		
Clearance and creepage distances	4.5 mm		
Solder pin dimension	2 x 0.5 x 1.0 mm		
Recommended pc board hole dia.	ø 1.4 mm		
Solder pin length	3.4 mm		
Protection category according to IEC 60529	IP 20		
Min. insul. strip length	15 mm		
Color	gray		



Product family Pole size Color Option
ST145xxVDNN * (AST145)
 Centerline Design Function *old product name

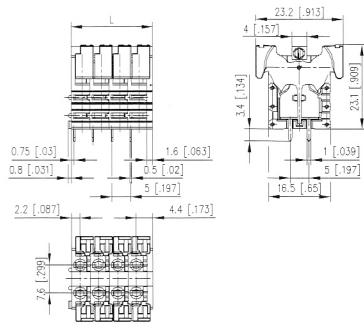
- spring clamp terminal block, solderable, double solder pins
- centerline 5.00 mm, direction of connection vertical 0°
- color gray
- push-button, two individual contacts per centerline

Technical data

UL US V / A / AWG 300 / 17 / 28 - 14

SEV 1.5 mm ²	450 V / 17.5 A / T60		
Overvoltage category	III	III	II
Pollution degree	3	2	2
Rated voltage	320 V	800 V	800 V
Rated test voltage	4 kV	4.0 kV	4 kV
Insulating material class	CTI 600		
Rated wiring solid wire	0.2 - 2.5 mm ²		
Rated wiring stranded wire	0.2 - 2.5 mm ²		
Rated wiring solid wire	AWG 28 - 12		
Rated wiring stranded wire	AWG 28 - 12		
Clearance and creepage distances	4.5 mm		
Solder pin dimension	2 x 0.5 x 1.0 mm		
Recommended pc board hole dia.	ø 1.4 mm		
Solder pin length	3.2 mm		
Protection category according to IEC 60529	IP 20		
Min. insul. strip length	12 mm		
Color	gray		

Dimensional drawing



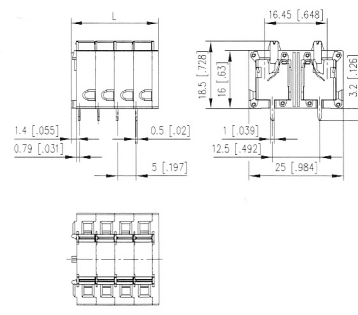
L = (Pole size - 1) * centerline + 6.6 mm (0.260 in.)

P/N
ST125XXVDNN

Complete the part number
 by adding the pole size.

02	03	04	05	06	07	08
09	10	11	12	13	14	15
16	17	18	19	20	21	22
23	24					

Dimensional drawing



L = (Pole size - 1) * centerline + 8 mm (0.315 in.)

P/N
ST145XXVDNN

Complete the part number
 by adding the pole size.

04	06	08	10	12	14	16
18	20	22	24	26	28	30
32	34	36	38	40	42	44
46	48					