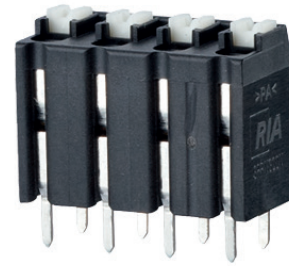
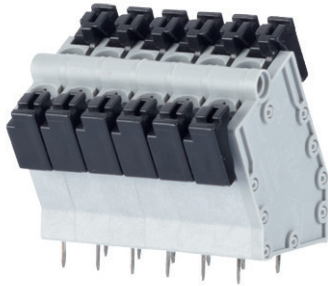


SPRING CLAMP TERMINAL BLOCKS, SOLDERABLE, 5.00mm PITCH

SPRING CLAMP TERMINAL BLOCKS, SOLDERABLE, 5.00mm PITCH



Product family Pole size Color Option
ST185xxLDNN * (AST185)
 Centerline Design Function *old product name

- spring clamp terminal block, solderable, double solder pins
- centerline 5.00 mm, direction of connection 60°
- color gray
- push-button, double solder pins

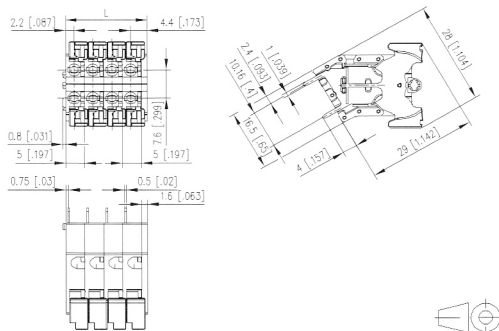
Technical data



V / A / AWG 300 / 15 / 28 - 12

SEV 1 mm ²	250 V / 13.5 A / T60		
Overvoltage category	III	III	II
Pollution degree	3	2	2
Rated voltage	320 V	800 V	800 V
Rated test voltage	4 kV	4.0 kV	4 kV
Insulating material class	CTI 600		
Rated wiring solid wire	0.08 - 2.5 mm ²		
Rated wiring stranded wire	0.08 - 2.5 mm ²		
Rated wiring solid wire	AWG 28 - 12		
Rated wiring stranded wire	AWG 28 - 12		
Clearance and creepage distances	4.5 mm		
Solder pin dimension	2 x 0.5 x 1.0 mm		
Recommended pc board hole dia.	ø 1.4 mm		
Solder pin length	4 mm		
Protection category according to IEC 60529	IP 20		
Min. insul. strip length	15 mm		
Color	gray		

Dimensional drawing

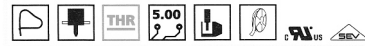


L = (Pole size - 1) * centerline + 6.6 mm (0.260 in.)

P/N
ST185XXLDNN

Complete the part number
 by adding the pole size.

02	03	04	05	06	07	08
09	10	11	12	13	14	15
16	17	18	19	20	21	22
23	24					



Product family Pole size Color Option
SR215xxVBNC * (AST215)
 Centerline Design Function *old product name

- spring clamp terminal block, THR solderable, double solder pins
- centerline 5.00 mm, direction of connection vertical 0°
- fittable without loss of poles
- color black
- Tape & Reel packaging
- push-button

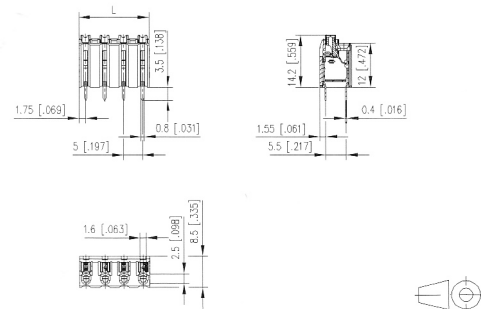
Technical data



V / A / AWG 300 / 10 / 28 - 16

SEV 1.5 mm ²	250 V / 17.5 A / T60		
Overvoltage category	III	III	II
Pollution degree	3	2	2
Rated voltage	250 V	630 V	630 V
Rated test voltage	4.0 kV	4.0 kV	4 kV
Insulating material class	CTI 600		
Rated wiring solid wire	0.08 - 1.5 mm ²		
Rated wiring stranded wire	0.08 - 1.5 mm ²		
Rated wiring solid wire	AWG 28 - 16		
Rated wiring stranded wire	AWG 28 - 16		
Clearance and creepage distances	3.4 mm		
Solder pin dimension	2 x 0.4 x 0.8 mm		
Recommended pc board hole dia.	ø 1.2 mm		
Solder pin length	3.5 mm		
Protection category according to IEC 60529	IP 20		
Min. insul. strip length	8.5 mm		
Color	black		

Dimensional drawing



L = (Pole size - 1) * centerline + 3.5 mm (0.138 in.)

P/N
SR215XXVBNC

Complete the part number
 by adding the pole size.

02	03	04	05	06	07	08
09	10	11	12	13	14	15
16	17	18	19	20	21	22
23	24					