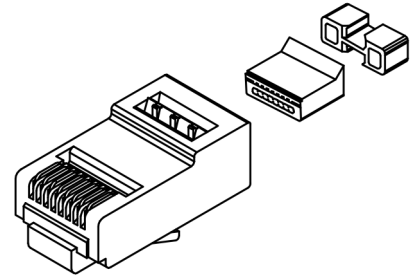


SMALL ENTRY CAT 6 MODULAR PLUGS, 28AWG

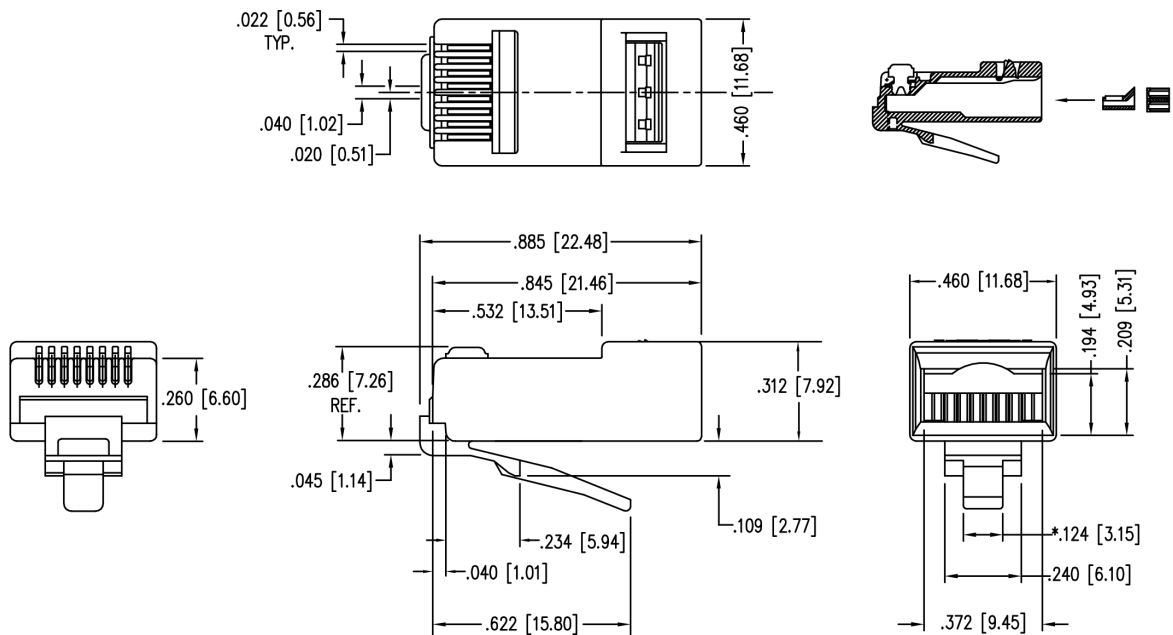
Designed for use with AWG28 conductor cables. Product comes complete with unshielded plug body, conductive load bar and pair guide. Plug is designed for use with AWG28 4 pair CAT 6, stranded cable used in high density and applications with restricted space.



PRODUCT CODE 111-080800B5LA4

TECHNICAL SPECIFICATION

- Use for stranded wire applications
- Meets or exceeds Category 6 ANSI/EIA 568-C 2
- Termination tool is Part 900005
- Termination die is Part 900272



4.0mm ENTRY, INSERT BOOT, CLEAR

Designed for use 111-080800B5LA4, clear insert boot accepts cable OD up to 4.0mm.

PRODUCT CODE SRB-B00058L

