

IDC, BOX HEADER WITH EJECTORS 2.54mm

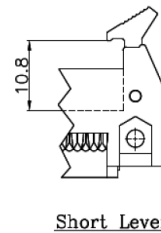
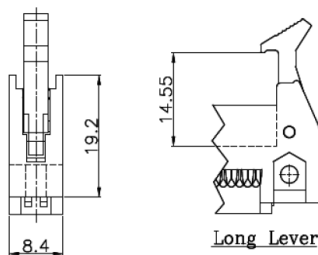
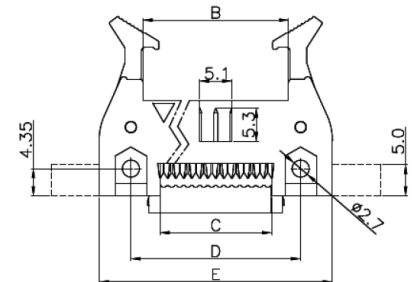
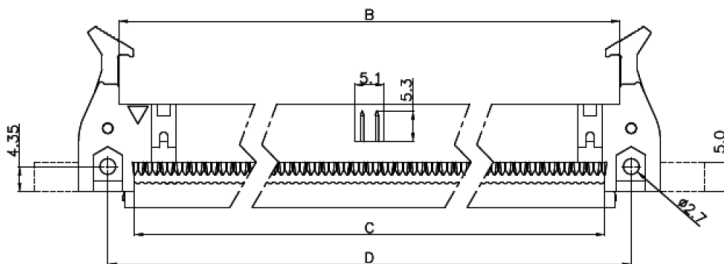
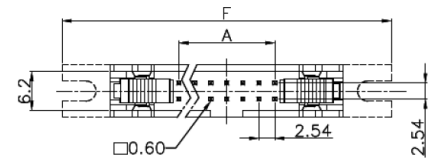
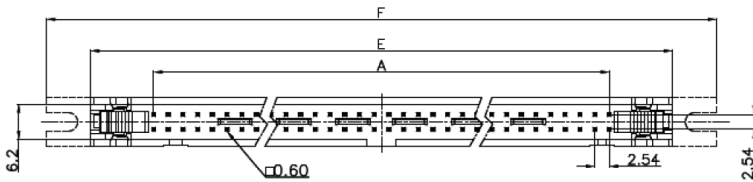
TECHNICAL SPECIFICATIONS

Material:	UL 94 V-0 Plastic Material
Operating Temperature:	-55°C to +105°C
Contacts:	Copper Alloy
Current rating:	1 A
Withstanding voltage:	AC 500V
Insulator Resistance:	1000MΩ min.
Contact Resistance:	20mΩ max.



FEATURES

- Long ejector is standard, short available on request
- Fully shrouded provides ultimate reliability
- Mounting ears optional
- Available in Black and Grey



Position	Dim A	Dim B	Dim C	Dim D	Dim E	Dim F
10	10,16	18,00	12,64	21,84	31,92	47,15
14	15,24	23,08	17,72	26,92	37,00	52,23
16	17,78	25,62	20,26	29,46	39,54	54,77
20	22,86	30,70	25,34	34,54	44,62	59,85
24	27,94	35,78	30,42	39,62	49,70	64,93
26	30,48	38,32	32,96	42,16	52,24	67,47
30	35,56	43,40	38,04	47,24	57,32	72,55
34	40,64	48,48	43,12	52,32	62,40	77,63
40	48,26	56,10	50,74	59,94	70,02	85,25
50	60,96	68,80	63,44	72,64	82,72	97,95
60	73,66	81,50	76,14	85,34	95,42	110,65
64	78,74	86,58	81,22	90,42	100,50	115,73

Grey, Long Lever	Black, Long Lever
3017-10COOY21A	3017-10COOB21A
3017-14COOY21A	3017-14COOB21A
3017-16COOY21A	3017-16COOB21A
3017-20COOY21A	3017-20COOB21A
3017-24COOY21A	3017-24COOB21A
3017-26COOY21A	3017-26COOB21A
3017-30COOY21A	3017-30COOB21A
3017-34COOY21A	3017-34COOB21A
3017-40COOY21A	3017-40COOB21A
3017-50COOY21A	3017-50COOB21A
3017-60COOY21A	3017-60COOB21A
3011-64COOY21A	3017-64COOB21A