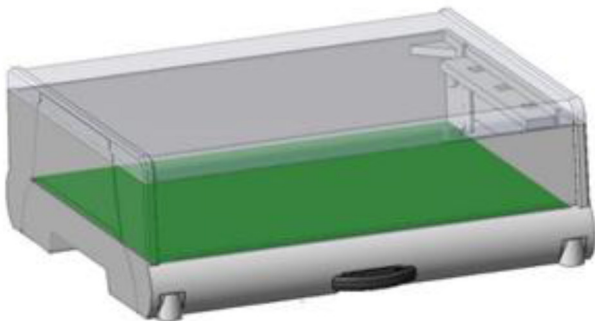


DIN RAIL MODULAR ENCLOSURES

MR6/BMX SERIES, 6 MODULE ENCLOSURE, LOW PROFILE



MR6/BMX

LOW-PROFILE DIN Rail Enclosure,, 6 unit, H 33 mm, for mounting on:

A) Omega Rail acc. to DIN EN 50022

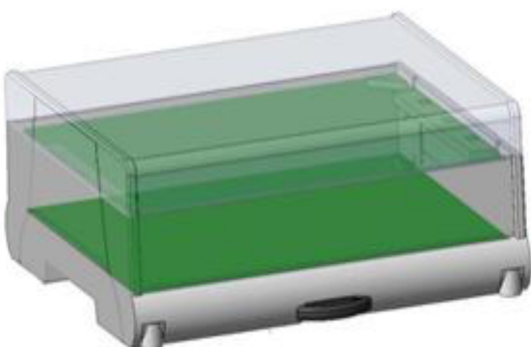
B) Wall

It is suitable to house a large Touch-Panel display and several boards at different levels, with increased internal space. Snap-in locking between base and cover. Snap-in front panel, **on request custom windowed for a display up to 90 mm x 87mm.**

Custom drilling on any side (windows, holes, slots). Made in Blend PC/ABS - on request, class UL94V0, in RAL7035 grey. Special colours on request.



MR6/MX SERIES, 6 MODULE ENCLOSURE



MR6/MX

Modular DIN Rail Enclosure,, 6 unit, H 48 mm, for mounting on:

A) Omega Rail acc. to DIN EN 50022

B) Wall

It is suitable to house a large Touch-Panel display and several boards at different levels, with increased internal space. Snap-in locking between base and cover. Snap-in front panel **on request custom windowed for a display up to 90 mm x 87mm.**

Custom drilling on any side (windows, holes, slots). Made in Blend PC/ABS - on request, class UL94V0, in RAL7035 grey. Special colours on request.

